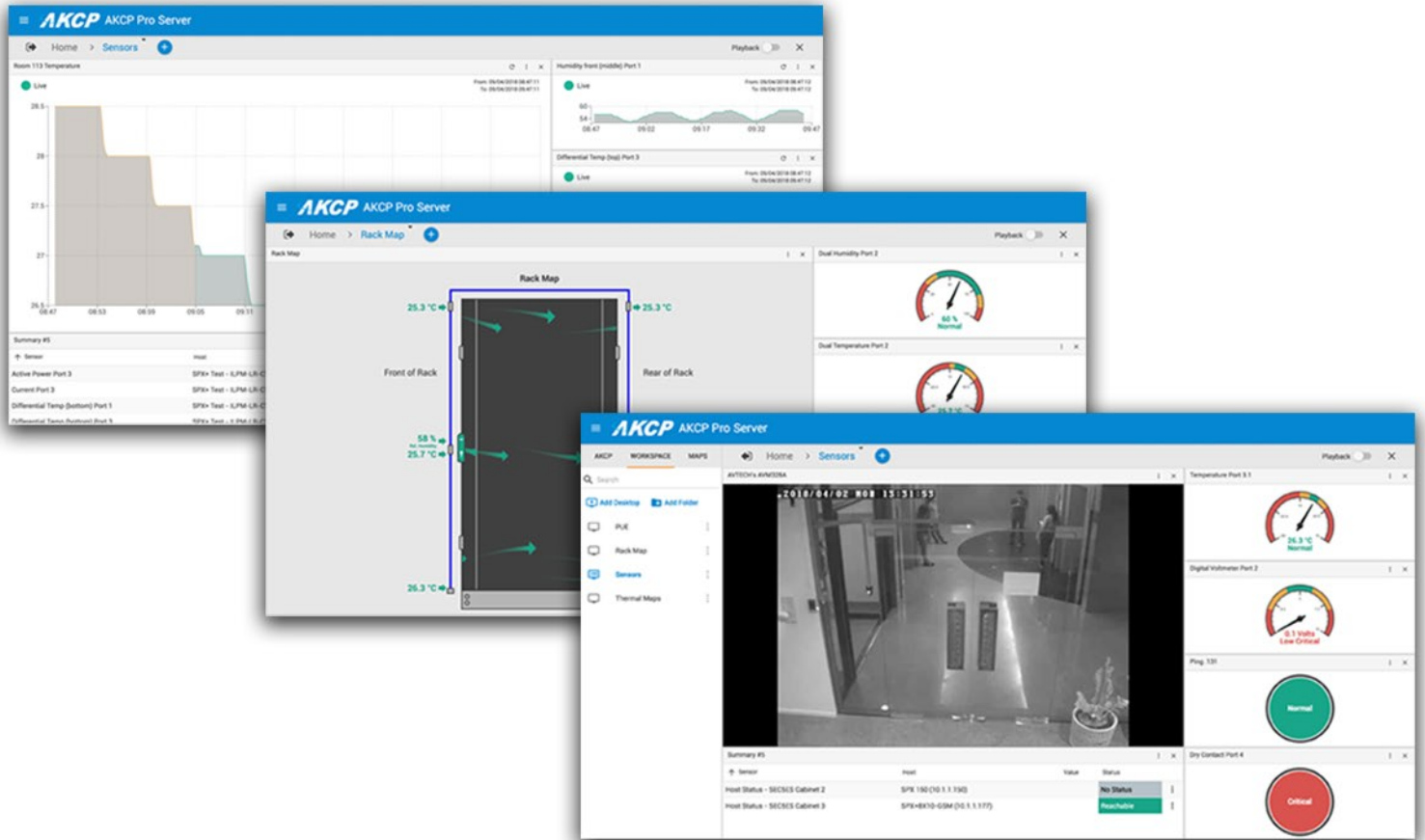


# World Class Infrastructure Management Software

AKCP Pro Server is our central monitoring and management software. Suitable for a wide range of monitoring applications. Free to use for all AKCP devices. Monitor your infrastructure, whether it be a single building, or remote sites over a wide geographic area. Integrate third party devices with, Modbus, SNMP and ONVIF compatible IP cameras.



## Monitor all your AKCP devices from a single user interface

All deployed AKCP base units and attached sensors can be configured and monitored from AKCP Pro Server (APS). Base units communicate with the server through your wired local network (LAN) or wide area network (WAN). Remote sites with no wired network send data to the server through the cellular data network\* via a VPN connection.



\* Requires base unit with cellular data 3G/4G modem

## Cross platform access

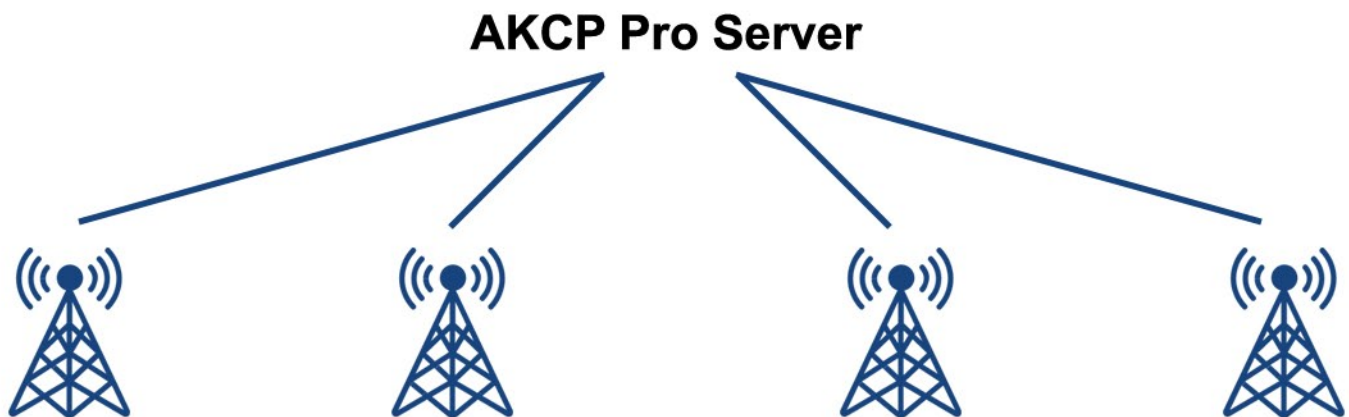
AKCP Pro Server can be accessed on your smartphone, tablet or PC. Access is operating system independent, viewable through the HTML5 user interface on any web browser\*.

There are no clients or special apps to install, making it easy to view your data on the go.



## Remote Site Management

When you have sites spread over a wide geographic area and require to monitor them from a single central office, AKCP Pro Server is the ideal choice. AKCP base units at remote sites can communicate over a wired or cellular data connection, sending data on connected sensors back to the main server. Remote monitoring of Modbus devices, generators and any SNMP compliant devices can be done through virtual sensors on APS. Mapping gives an overview of all sites, with drill down from wide area to specific sites.



\*Chrome or Firefox recommended

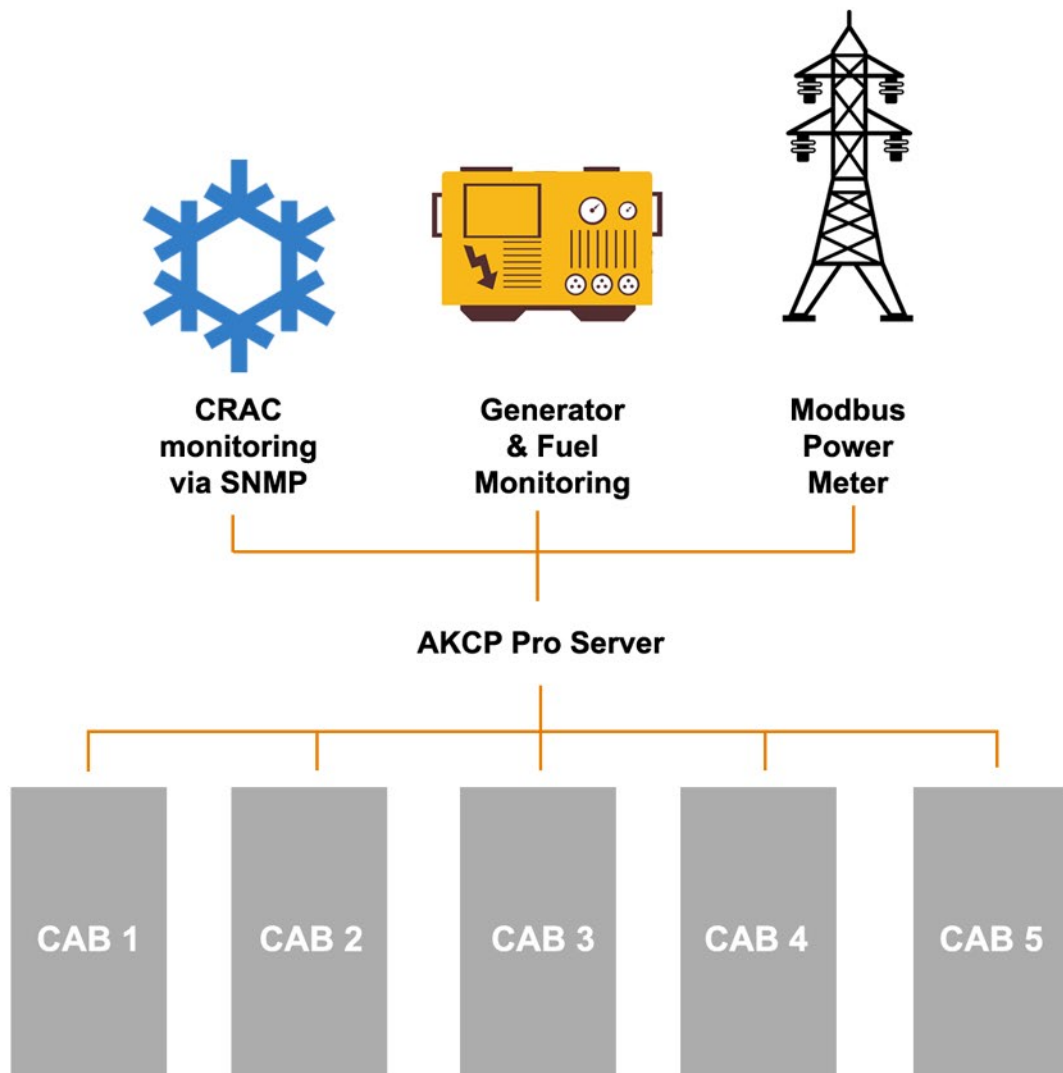
# Data Center Infrastructure Management (DCIM)

AKCP Pro Server is a world class software for Data Center Infrastructure Management (DCIM). Avoid the complexity and cost of many popular DCIM software. AKCP Pro Server distills the essence of what DCIM should be to a simple, easy to use application.

Configure dashboards to display the data you need, with drill down mapping taking you from a data center wide to cabinet level view. A dedicated rack map shows smartRack sensors such as thermal maps and RFID Swing Handle lock information in a graphical display.

## Features

- Monitor your power train and calculate live PUE numbers
- Check power overhead when installing new devices
- Data center infrastructure monitoring and planning
- Building and rack level access control and management
- Integration to video security systems
- Thermal mapping of cabinets



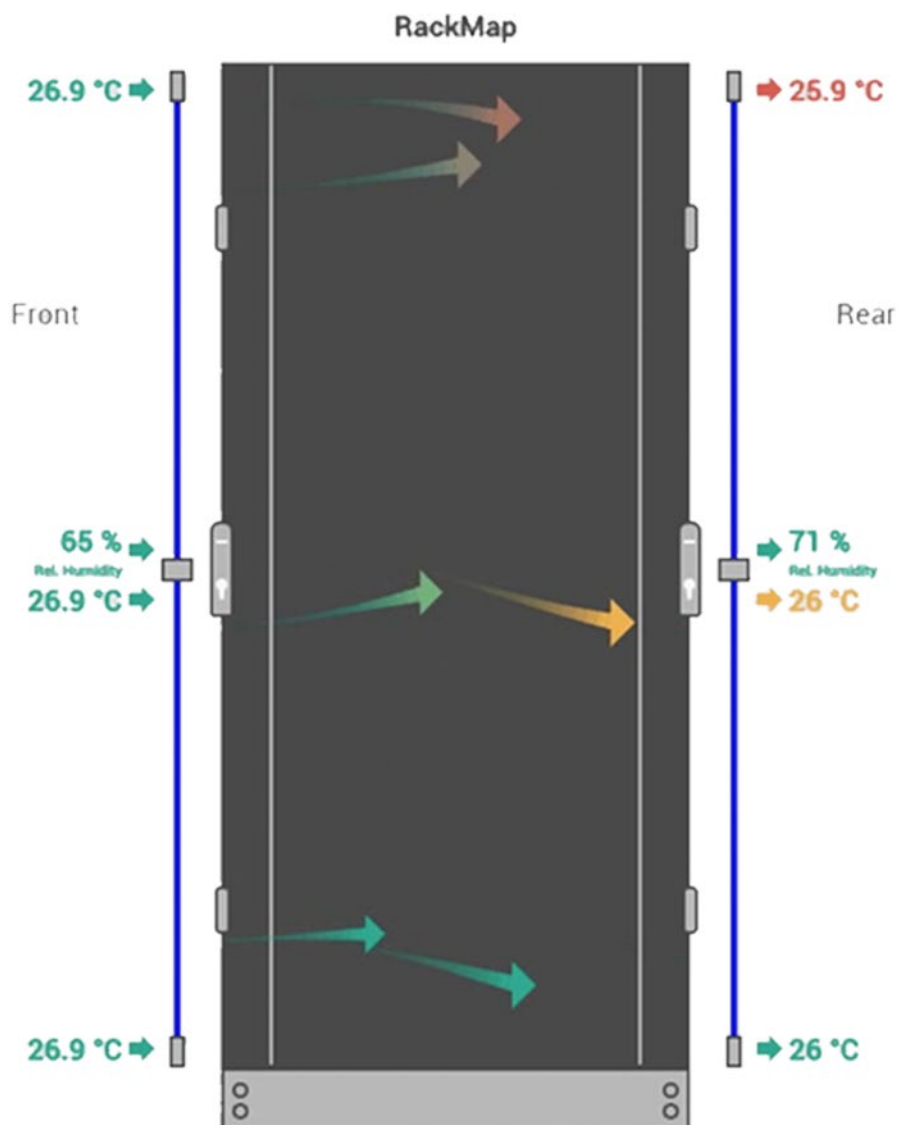
Monitor power consumption and thermal properties of your complete data center

## Rack Mapping

Rack mapping is a graphical display in AKCP Pro Server that gives an accurate picture of your rack condition. With rack maps you can:

- View thermal map sensors front, rear and temperature differentials
- Track assets in your cabinets
- View the status of rack equipment
- View security status with RFID Swing Handle Cabinet Locks

Thermal maps sensors consist of 9 measurement points, top middle and bottom, plus the temperature differential between front and rear. Optional humidity front and rear is available. The sensors together with our graphical display of the data will aid greatly in identifying cabinet hot spots.



Example of AKCP Pro Server rack map view, with thermal map sensor and front to rear temperature differentials.

## Customize Desktops

AKCP Pro Server desktops are customized for each user to show the information relevant to them. Desktops display sensor data, gauges, drill down maps, cabinet rack maps, graphs and video feeds. Arrange the windows yourself, or choose from pre-determined layouts for easy setup.

Desktops show a live view, or can be switched to playback for review of historical data, with sensor events synchronized with video on the playback timeline.

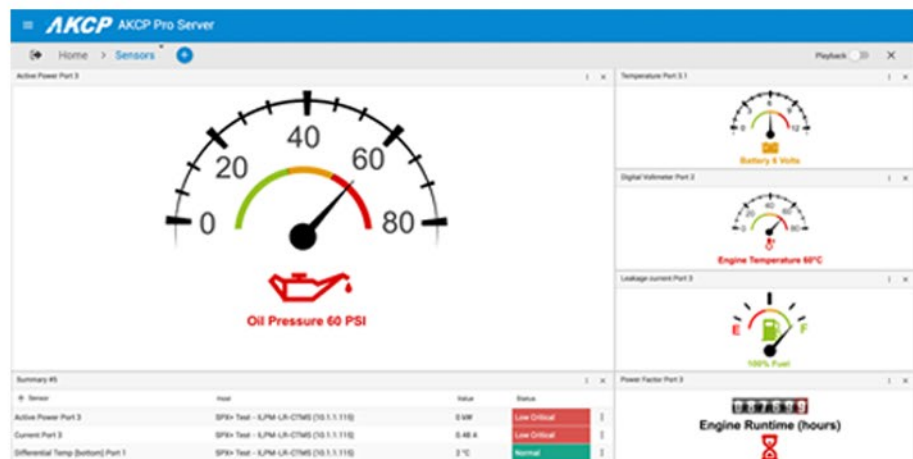
## Graphing Desktops

Desktops can be arranged with graphs to show historical sensor data. Desktops can be customized to combine graphs with other sensor data and status indicators and/or gauges.



## Sensor Gauges

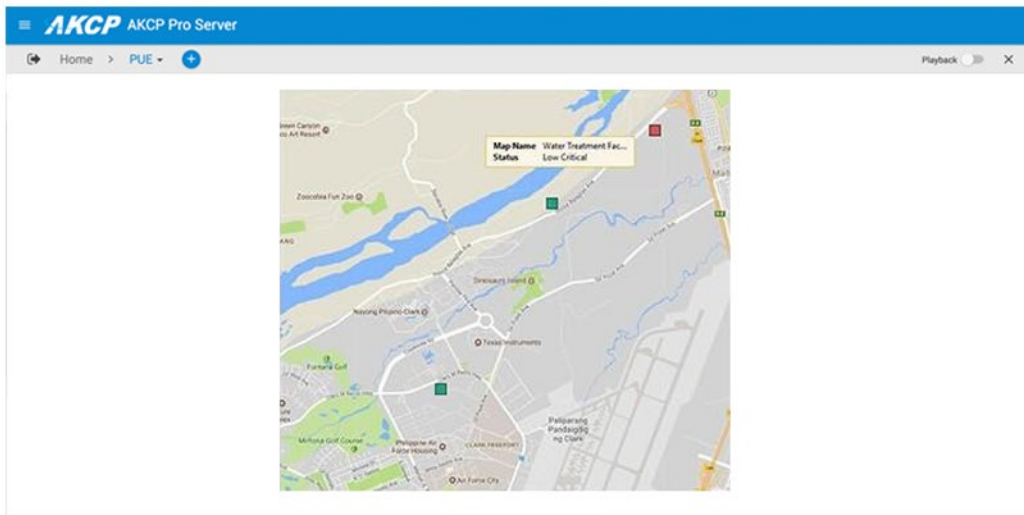
A selection of gauges can be used to display sensor data, specially designed with battery and engine monitoring in mind, they simulate the real world engine gauges.



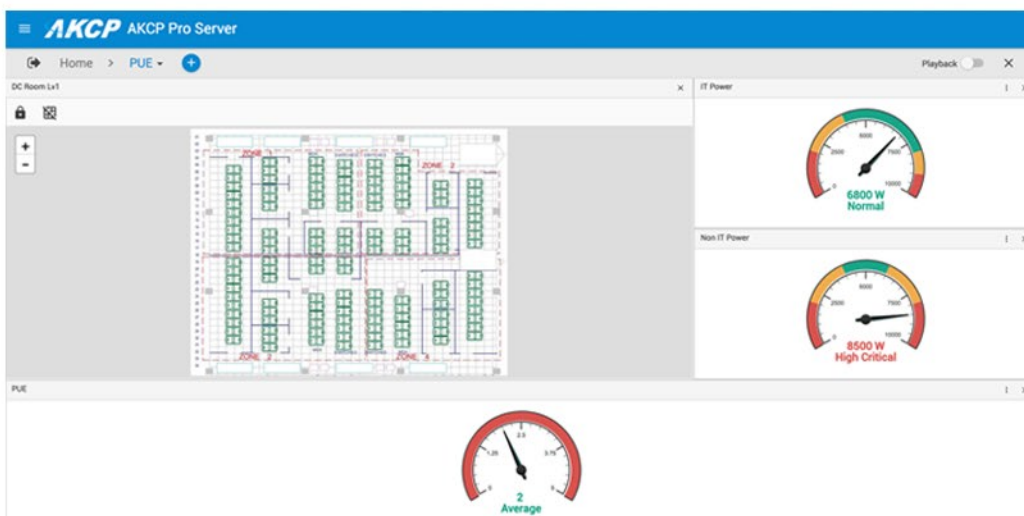
## Drilldown Mapping Desktops

Drill down maps can be added to desktops together with gauges or lists of sensor data. Sensors can be overlaid on maps to show their location.

Map icons can be customized, and will display the status of the sensor, or the worst sensor status of a drilldown submap. Ideal for control rooms, and monitoring a large number of sensors or sites from a single dashboard.

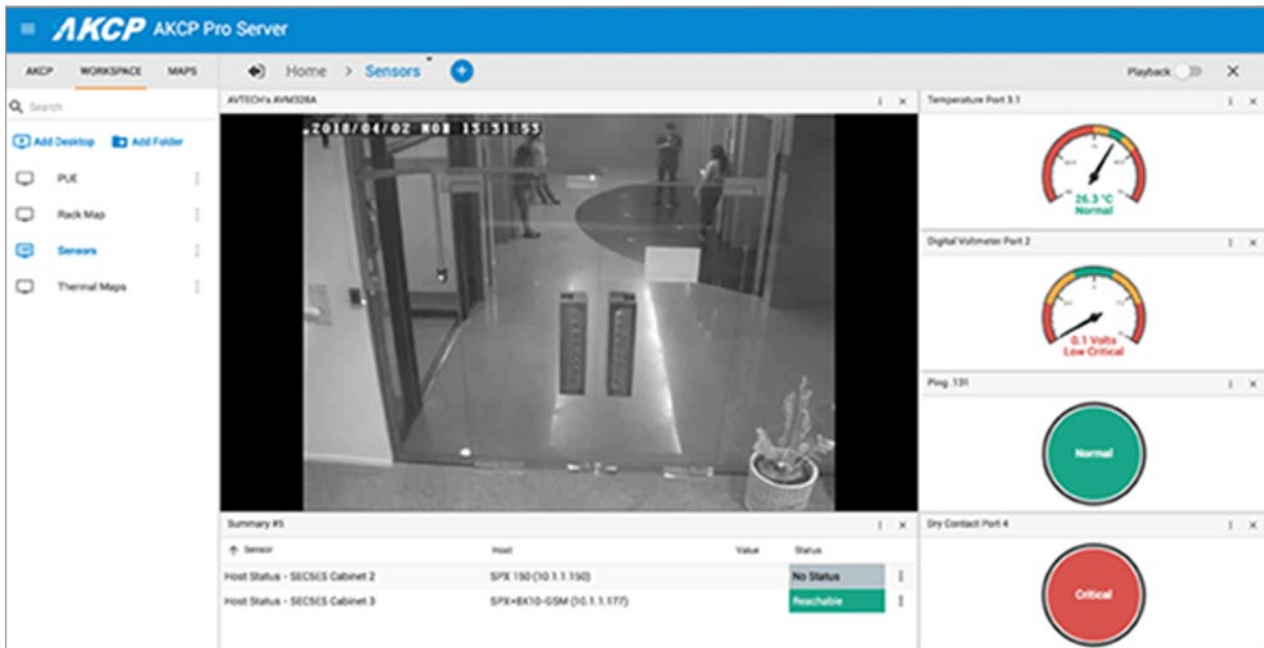


Drill down from a wide geographic area to a specific site

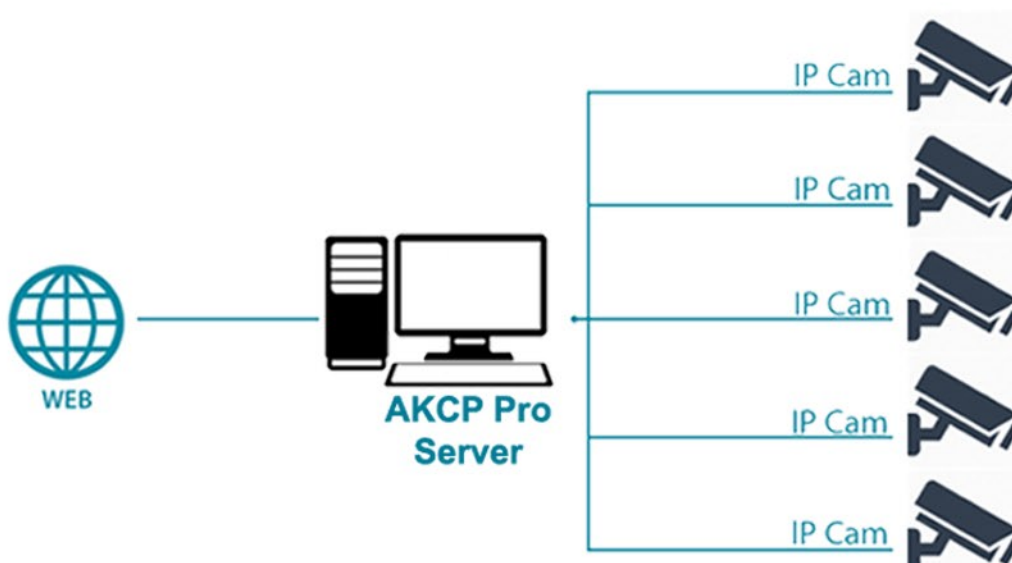


# Video Integration

AKCP Pro Server integrates with IP based ONVIF compatible video cameras. Sensor events from AKCP and virtual sensors are synchronized in the playback window. This allows for easy visual reference of critical events or security breaches.



Desktops show live video, together with sensor status, and can be switched to playback, giving you an easy way to go back to specific sensor events and automatically recall and playback video from that time. Great for integration with access control systems, to have a visual reference for every access event.



## Access Control

From AKCP Pro Server you can administer access control schedules and privileges, view access logs and reports on a per door, or per user basis. Know who accessed, what time and synchronize with video systems in the playback window to review actual video footage of the events.

Receive alerts if doors are left open, if unauthorized access attempts are made, setup anti passback features such as card expiration dates.

For the data center install AKCP RFID Swing Handle Cabinet Locks to protect your rack assets, and view the security status of the cabinets from the rack map desktops.

